

Workforce Education and Training (WEaT) Group

1. Membership

- a. Network Director
- b. Network Quality Improvement Lead
- c. Clinical Effectiveness Group representative (Network Quality Improvement Lead)
- d. Lancs & S Cumbria Critical Care HEI 'Clinical/Specialty Tutors'
- e. Critical Care and Cardiac ITU Educators

2. Co-Opted Members

- a. Health Education England (HEE)
- b. Workforce/HR Leads

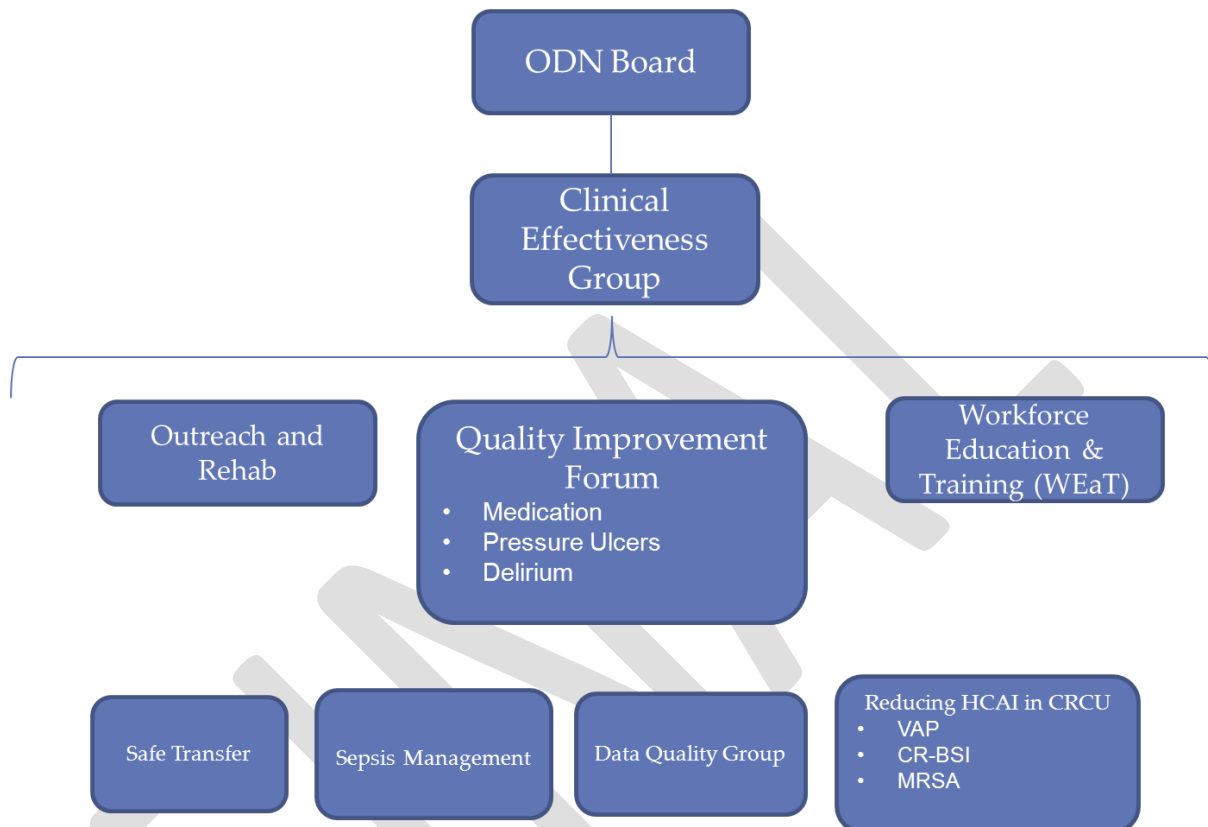
3. Terms of Reference

- a. To develop a network wide approach for effective critical care nurse education and workforce utilization.
- b. To identify the training needs of Critical Care nurses, Mentors and the wider critical care non-registered workforce to fulfill their roles e.g. appraisal, use of assessment tools, counseling, careers advice etc.
- c. To facilitate/support the creation of HEI programmes of education to meet the recommendations within the Framework for Nursing and Midwifery and other relevant national/regional documents.
- d. To benchmark the workforce against the National Education Standards for Critical Care Nurses and work collaboratively to address areas for improvement.
- e. To provide a network of educators/trainers to work collaboratively to create a learning environment across Lancashire & South Cumbria; improving the standard of teaching and facilitating the learning needs of all staff in order to improve patient care.
- f. To create a unified approach to all documentation e.g., competency, induction/learning programmes, work based learning etc.
- g. To provide a forum for the discussion of Audit/Quality Assurance/value for money for educational programmes and events both internal and external.
- h. To share any strengths and weaknesses highlighted in HEI or College visits and provide support to address any recommendations.
- i. To provide an arena for sharing and solving issues around Clinical Governance regarding Training & Education.
- j. Group members to work collaboratively and to identify other appropriate stakeholders and co-opt them onto the group as necessary.

4. Form and Function

1. To be held quarterly at Chorley & South Ribble DGH or other appropriate venue as agreed by group members.
2. Meeting dates to be set annually.
3. Administrative support to be provide by the Lancashire and S Cumbria Critical Care Network
4. Actions for improvement to be equally shared between group members

5. L&SC Critical Care Network Groups



NB. Other task and finishing groups will emerge as areas for action and improvement are identified.